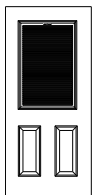


ODL ENCLOSED
BLINDS
for steel and fiberglass doors

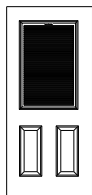
Easy to install. Easy to use. Easy to own.

- Enclosed in toughened safety glass - no swinging blinds
- Raise, lower and tilt with fingertip ease
- Increases energy efficiency of door up to 104%
- Child Safe - no exposed cords

Sizes:



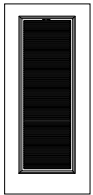
20 x 36
50.8 x 91.4



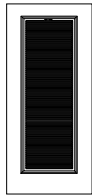
22 x 36
55.9 x 91.4



8 x 36
20.3 x 91.4



20 x 64
50.8 x 162.6



22 x 64
55.9 x 162.6



7 x 64
17.8 x 162.6



No Cords



No Swinging



PRIVACY AND FLAIR WITHOUT THE HASSLE.

You can install it yourself.

Just use a screwdriver and follow the simple steps detailed in the instruction booklet.

You can adjust it with a fingertip.

Two sliding tabs, one on each side of the blind unit, control blind height and tilt.

You can enjoy trouble-free ownership.

No dusting, no hanging cords, no swinging blinds. The glass included with the blind unit is toughened safety glass and the entire assembly is backed by a Five-Year Limited Warranty.

Additional Features:



Paint to match décor

Toughened safety glass

Thermal/UV performance

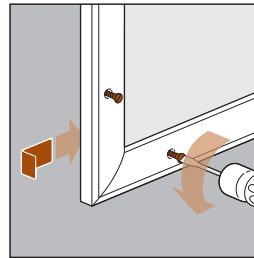
How to find your size.

Measure twice. Buy once.

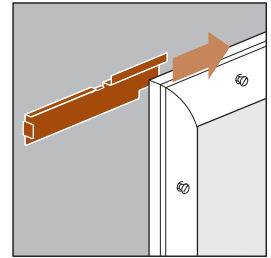
To determine if your door window or sidelight will accommodate an enclosed blind unit, use a carpenter's metal tape measure to verify the dimensions, as shown to the right. Re-measure to double-check your figures.

- Measure the width and height of your door window or sidelight. **Always take measurements from the center of the screw holes.** Screw hole caps may need to be removed.
- Select half view or full view size for door windows.

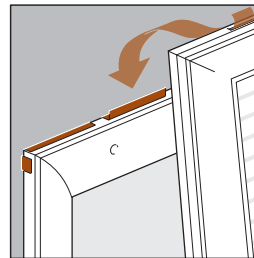
Easy Installation Process:



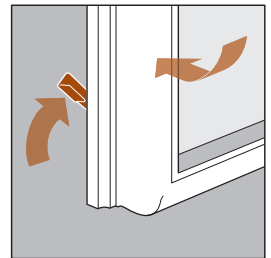
1. Loosen 8 screws on the existing frame



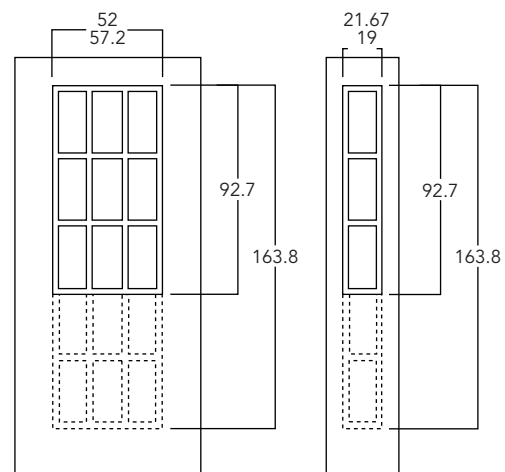
2. Install the brackets behind the existing frame



3. Hang the unit



4. Lock the clips



* Measure from screw to screw.
All measurements in cm.



ODL Europe Ltd
1 Brook Road, Bootle, Liverpool L20 4XP
Ph: 0151.933.0299 or (0800.962.243 UK only)
Fx: 0151.933.0255 or (0800.962.254 UK only)
E-mail: sales@odleurope.com
Reg. No. 5319594

U.S. Patent # 6,817,401

16593-450
(05/07)